

# MONTHLY MEMBERSHIP PROGRESS REPORT

District 325 H

Results as of: 11/30/2024

GMT:

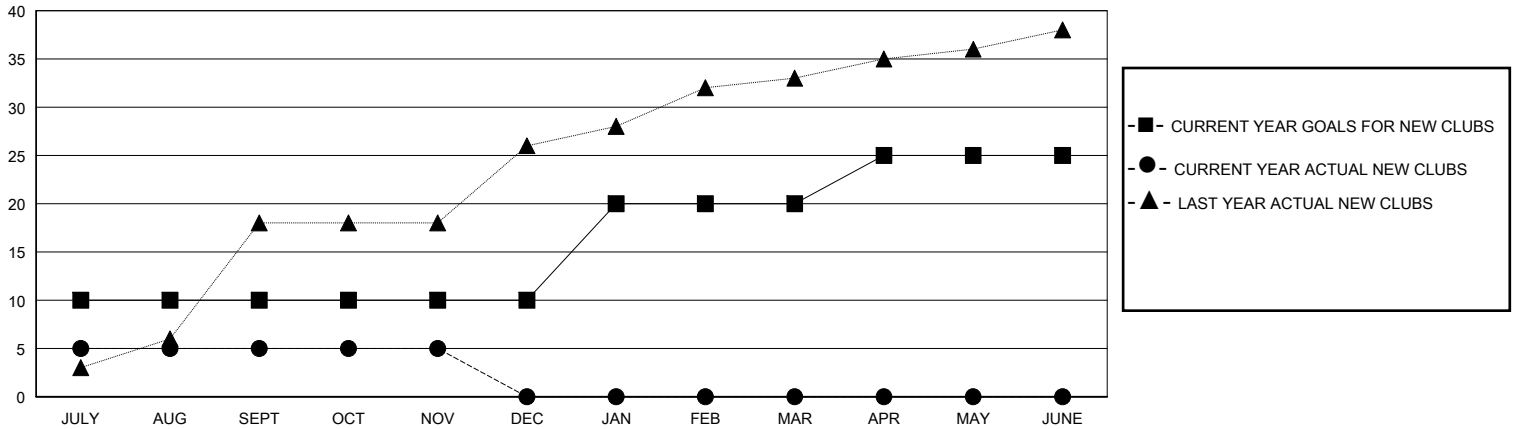
LOCATION NEPAL

GMT CA

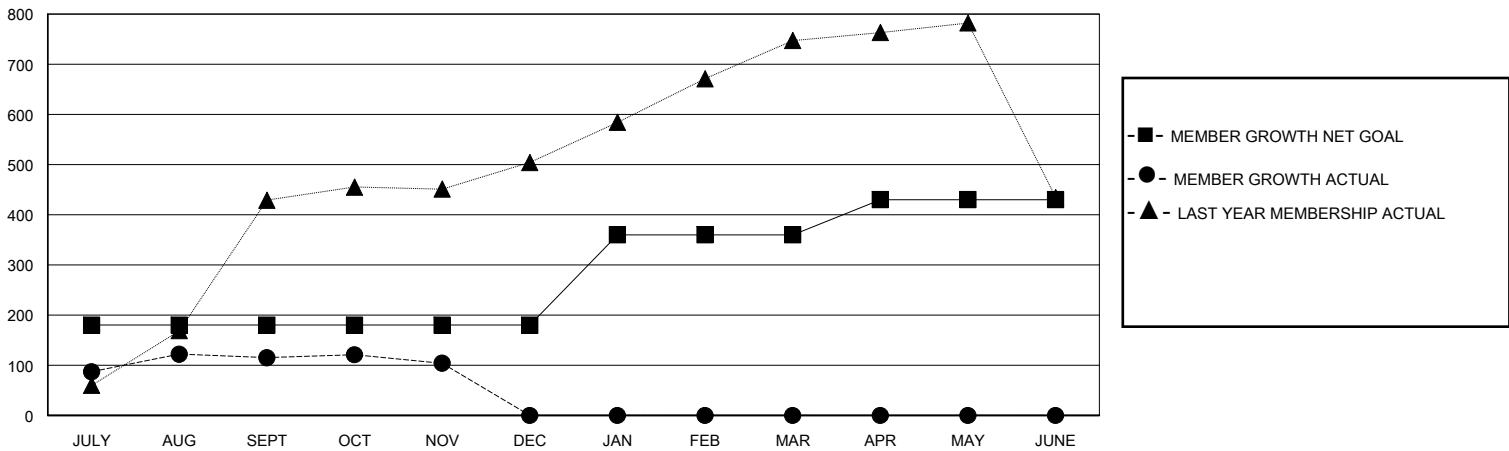
Clubs			
RESULTS FOR 2024-2025			
QUARTER	NEW CLUB GOAL	NEW CLUBS	DROPPED CLUBS
JULY/AUG/SEPT	10	5	5
OCT/NOV/DEC	0	0	0
JAN/FEB/MAR	10	0	0
APR/MAY/JUNE	5	0	0

Members			
RESULTS FOR 2024-2025			
QUARTER	MEMBER GROWTH NET GOAL	MEMBER GROWTH ACTUAL	DROPPED MEMBERS ACTUAL (including transfers)
JULY/AUG/SEPT	180	241	112
OCT/NOV/DEC	0	33	26
JAN/FEB/MAR	180	0	0
APR/MAY/JUNE	70	0	0

GOALS AND ACTUAL NEW CLUBS CUMULATIVE



GOALS AND ACTUAL MEMBERS CUMULATIVE



<b>DROPPED CLUBS: 5</b>	43 CLUBS OF 120 ADDED 1 OR MORE NEW MEMBERS	<b>GENDER DISTRIBUTION</b>	
		MALE 1,853 (67.55%)	FEMALE 890 (32.45%)
<b>DROPPED MEMBERS</b>		<a href="#">CLICK HERE FOR CUMULATIVE MEMBERSHIP DATA</a>	TOTAL FAMILY UNIT MEMBERS 0
DECEASED 0	CLUB CANCELLED 73		FAMILY MEMBERS PAYING HALF DUES 0
OTHER 61	TOTAL 134		